

PRODUCT MONOGRAPH
INCLUDING PATIENT MEDICATION INFORMATION

PrBLEXTEN®

(Bilastine)

Tablets, 20 mg

Histamine H₁-Receptor Antagonist

Aralez Pharmaceuticals Trading DAC
2 Hume Street, Dublin 2
Ireland DO2 FT82

Date of Revision:
July 10, 2018

Imported and Distributed By:
Aralez Pharmaceuticals Canada Inc.
7100 West Credit Avenue, Suite 101
Mississauga, Ontario
Canada L5N 0E4

Submission Control No: 214883

Table of Contents

PART I: HEALTH PROFESSIONAL INFORMATION	3
SUMMARY PRODUCT INFORMATION	3
INDICATIONS AND CLINICAL USE.....	3
CONTRAINDICATIONS	3
WARNINGS AND PRECAUTIONS.....	4
ADVERSE REACTIONS.....	5
DRUG INTERACTIONS	8
DOSAGE AND ADMINISTRATION	10
OVERDOSAGE	10
ACTION AND CLINICAL PHARMACOLOGY	11
STORAGE AND STABILITY.....	14
SPECIAL HANDLING INSTRUCTIONS	14
DOSAGE FORMS, COMPOSITION AND PACKAGING	14
PART II: SCIENTIFIC INFORMATION	16
PHARMACEUTICAL INFORMATION.....	16
CLINICAL TRIALS.....	17
DETAILED PHARMACOLOGY	22
TOXICOLOGY	23
REFERENCES	26
PART III: PATIENT MEDICATION INFORMATION	27

PrBLEXTEN®
(Bilastine)

PART I: HEALTH PROFESSIONAL INFORMATION

SUMMARY PRODUCT INFORMATION

Route of Administration	Dosage Form / Strength	All Nonmedicinal Ingredients
Oral	Tablet / 20 mg	colloidal anhydrous silica, magnesium stearate, microcrystalline cellulose, sodium starch glycolate

INDICATIONS AND CLINICAL USE

Seasonal Allergic Rhinitis

BLEXTEN (bilastine) is indicated for the symptomatic relief of nasal and non-nasal symptoms of seasonal allergic rhinitis (SAR) in patients 12 years of age and older.

Chronic Spontaneous Urticaria

BLEXTEN (bilastine) is indicated for the relief of the symptoms associated with chronic spontaneous urticaria (CSU) (e.g. pruritus and hives), in patients 18 years of age and older.

Geriatrics (> 65 years of age):

No dosage adjustments are necessary in patients over 65 years (see ACTION AND CLINICAL PHARMACOLOGY, DOSAGE AND ADMINISTRATION).

Pediatrics (< 12 years of age):

The safety and efficacy of BLEXTEN in children under 12 years of age have not been established.

CONTRAINDICATIONS

BLEXTEN is contraindicated in patients with:

- hypersensitivity to bilastine or to any ingredient in the formulation or component of the container. For a complete listing of ingredients and components (see Dosage Forms, Composition and Packaging).
- a history of QT prolongation and/or torsade de pointes, including congenital long QT syndromes (see WARNINGS AND PRECAUTIONS, DRUG INTERACTIONS, ACTION AND CLINICAL PHARMACOLOGY).

WARNINGS AND PRECAUTIONS

Cardiovascular:

BLEXTEN has been associated with QTc interval prolongation (see ACTION AND CLINICAL PHARMACOLOGY, Cardiac Electrophysiology). Drugs that cause QT/QTc prolongation are suspected of increasing the risk of torsade de pointes. Torsade de pointes is a polymorphic ventricular tachyarrhythmia. Generally, the risk of torsade de pointes increases with the magnitude of QT/QTc prolongation produced by the drug. Torsade de pointes may be asymptomatic or experienced by the patient as dizziness, palpitations, syncope, or seizures. If sustained, torsade de pointes can progress to ventricular fibrillation and sudden cardiac death.

BLEXTEN should not be used in patients with a history of QTc prolongation and/or torsade de pointes, including congenital long QT syndromes (see CONTRAINDICATIONS).

Particular care should be exercised when administering antihistamines, including BLEXTEN to patients who are suspected to be at an increased risk of experiencing torsade de pointes during treatment with a QTc-prolonging drug. This includes patients who have a history of cardiac arrhythmias; hypokalemia; hypomagnesaemia; significant bradycardia; family history of sudden cardiac death; concomitant use of other QT/QTc-prolonging drugs.

When drugs that prolong the QTc interval are prescribed, healthcare professionals should counsel their patients concerning the nature and implications of the ECG changes, underlying diseases and disorders that are considered to represent risk factors, demonstrated and predicted drug-drug interactions, symptoms suggestive of arrhythmia, risk management strategies, and other information relevant to the use of the drug.

Hepatic

BLEXTEN has not been studied in subjects with hepatic impairment. Since bilastine is not metabolized and renal clearance is the major route of elimination, hepatic impairment is not expected to increase systemic exposure above the safety margin.

Renal

In subjects with moderate or severe renal impairment co-administration of bilastine with P-glycoprotein inhibitors, such as ketoconazole, erythromycin, cyclosporine, ritonavir or diltiazem, may increase plasma levels of bilastine and therefore increase the risk of adverse effects. Co-administration of bilastine and P-glycoprotein inhibitors should be avoided in subjects with moderate or severe renal impairment.

Special Populations

Pregnant Women

There are no adequate and well-controlled studies in pregnant women. Until such data become available, BLEXTEN should be avoided during pregnancy, unless advised otherwise by a physician.

Animal studies do not indicate major direct or indirect harmful effects with respect to reproductive toxicity, parturition or postnatal development (see TOXICOLOGY).

Twelve (12) pregnancies were reported during bilastine investigation. Follow-up was performed by the investigators through to the birth of newborns. Their observations indicated that there had been a normal outcome reported for every pregnancy, except one miscarriage due to an antiphospholipid syndrome (case history of repeated miscarriages) resulting in an induced abortion (voluntary).

Nursing Women

The excretion of bilastine in milk has not been studied in humans. Available pharmacokinetic data in animals have shown excretion of bilastine in milk. A decision on whether to continue/discontinue breast-feeding or to continue/discontinue therapy with BLEXTEN should be made taking into account the benefit of breast-feeding to the child, the benefit of bilastine therapy to the mother, and these should be weighed against possible effects on the infant.

Pediatrics (< 12 years of age)

The safety and efficacy of BLEXTEN in children under 12 years of age has not been established.

Geriatrics (> 65 years of age)

No dosage adjustments are recommended in subjects over 65 years of age (see ACTION AND CLINICAL PHARMACOLOGY and DOSAGE AND ADMINISTRATION).

ADVERSE REACTIONS

Adverse Drug Reaction Overview

The clinical safety of bilastine was evaluated in 10 Phase 2 and 3 studies performed in 2186 subjects with allergic rhinitis, or chronic spontaneous urticaria (CSU), where bilastine was used at doses ranging from 10 – 40 mg over treatment periods of 2 – 4 weeks.

The most common treatment-emergent adverse reactions reported in the double-blind Phase 3 studies involving 931 subjects treated with bilastine 20 mg were related to the central nervous system (headache, dizziness and somnolence) and the gastrointestinal system (abdominal pain upper).

Treatment-emergent cardiovascular effects occurred infrequently or rarely (bundle branch block right sinus arrhythmia, sinus bradycardia and ventricular extrasystoles, abnormal ECG investigations) in clinical studies.

A one year open-label safety study in 513 allergic rhinitis patients was conducted with BLEXTEN. The most common adverse events seen in this open-label study were headache, influenza, and nasopharyngitis.

Clinical Trial Adverse Drug Reactions

Because clinical trials are conducted under very specific conditions the adverse reaction rates observed in the clinical trials may not reflect the rates observed in practice and should not be compared to the rates in the clinical trials of another drug. Adverse drug reaction information from clinical trials is useful for identifying drug-related adverse events and for approximating rates.

At the recommended dose of 20 mg daily, treatment-emergent adverse reactions with BLEXTEN were equal to those treated with placebo. The most commonly reported related AEs were dizziness, headache and somnolence.

The incidence of treatment-emergent adverse reactions reported by ≥1% of subjects treated with bilastine in Phase 2 and 3 trials is presented in Table 1.

Table 1 Treatment-Emergent Adverse Reactions Reported in ≥ 1% of Subjects Treated with Bilastine in the Double Blind Studies

Body System / AE	BLEXTEN N=931	Placebo N=950
Gastrointestinal disorders	28 (3.01%)	28 (2.95%)
Abdominal pain upper	10 (1.07%)	4 (0.42%)
Nervous system disorders	81 (8.70%)	55 (5.79%)
Dizziness	10 (1.07%)	4 (0.42%)
Headache	40 (4.30%)	28 (2.95%)
Somnolence	38 (4.08%)	25 (2.63%)

Less Common Clinical Trial Adverse Reactions (<1%)

The following events were observed in < 1% of 2186 patients treated with bilastine in Phase 2 and 3 clinical studies.

Blood and lymphatic system disorders: Anaemia

Cardiac disorders: Bundle branch block right, sinus arrhythmia, sinus bradycardia, ventricular extrasystoles,

- *ECG investigations: electrocardiogram QT prolonged, electrocardiogram ST-T segment abnormal, electrocardiogram T wave abnormal, electrocardiogram T wave inversion, electrocardiogram abnormal, QRS axis abnormal*

Ear and labyrinth disorders: Motion sickness, tinnitus, vertigo

Eye disorders: Eye pain

Gastrointestinal disorders: Abdominal pain, constipation, diarrhoea, dry mouth, dysgeusia, dyspepsia, eructation, gastritis, nausea, stomach discomfort, tongue dry, vomiting

General disorders and administration site conditions: Asthenia, chest discomfort, discomfort, fatigue, feeling jittery, pain, pyrexia, thirst

Infections and infestations: Oral herpes, pharyngitis

Investigations: Alanine aminotransferase increased, aspartate aminotransferase increased, blood bilirubin increased, blood cholesterol increased, blood triglycerides increased, gamma-glutamyltransferase increased, weight decreased, weight increased

Metabolism and nutrition disorders: Increased appetite

Musculoskeletal and connective tissue disorders: Back pain, muscular weakness, myalgia

Nervous system disorders: Disturbance in attention, hypersomnia

Psychiatric disorders: Anxiety, insomnia, nightmare

Reproductive system and breast disorders: Menstruation delayed

Respiratory, thoracic and mediastinal disorders: Dyspnoea, epistaxis, nasal discomfort, nasal dryness, throat irritation

Skin and subcutaneous tissue disorders: Dermatitis acneiform, pruritus, rash popular, urticaria

Long term open-label study:

The adverse event profile in the long term follow up study (1 year) in 513 patients demonstrated a similar profile to that observed in the controlled 2-4 week Phase 2 and 3 clinical studies (see Adverse Reactions Overview).

Post-Market Adverse Drug Reactions

Because adverse events are spontaneously reported in a voluntary manner from a population of uncertain size, it is not possible to reliably estimate their frequency or establish a causal relationship to drug exposure.

The following adverse reactions have been observed during the post-marketing period: palpitations, tachycardia, and hypersensitivity reactions (such as anaphylaxis, angioedema, dyspnoea, rash, localized edema/local swelling, and erythema).

A case of torsade de pointes has been reported following the use of bilastine when administered with concomitant medications known to have the potential for QT prolongation.

DRUG INTERACTIONS

Overview

The psychomotor performance after concomitant intake of alcohol and BLEXTEN was similar to that observed after intake of alcohol and placebo (see DETAILED PHARMACOLOGY / Human Pharmacodynamics / Psychomotor Pharmacodynamics).

Particular care should be exercised when administering antihistamines, including BLEXTEN to patients who are suspected to be at an increased risk of experiencing torsade de pointes during treatment with a QTc-prolonging drug (see CONTRAINDICATIONS, WARNINGS AND PRECAUTIONS, DRUG INTERACTIONS, ACTION AND CLINICAL PHARMACOLOGY).

Drug-Drug Interactions

Ketoconazole and erythromycin

Concomitant administration of bilastine and ketoconazole or erythromycin increased bilastine AUC 2-fold and C_{max} 2-3 fold. These changes can be explained by interaction with intestinal efflux transporters, since bilastine is a substrate for P-gp and not metabolized.

In a randomised, double-blind, placebo- and positive-controlled, 5-way crossover ECG assessment study in 30 healthy adult subjects, bilastine 20 mg/day administered alone for four days was associated with statistically significant positive mean differences from placebo in the QTcF interval at 1 and 3 h post-dosing on day 4, with a maximum mean difference from placebo of 4.0 ms (90% CI 1.20, 6.73) at 1 h, whereas bilastine 20 mg/day and ketoconazole 400 mg administered concomitantly for four days produced statistically significant QTcF prolongation at all time points from 0.5-12 h, inclusive, on day 4 with a maximum mean difference from placebo of 10.0 ms (90% CI 6.49, 13.43) at 1 h. Other medicinal products that are substrates or inhibitors of P-gp, such as cyclosporine, may likewise have the potential to increase plasma concentrations of bilastine.

Diltiazem

Concomitant administration of BLEXTEN and diltiazem 60 mg increased C_{max} of bilastine by 50%. This effect can be explained by interaction with intestinal efflux transporters, and does not appear to affect the safety profile of bilastine.

Lorazepam

Concomitant intake of BLEXTEN and lorazepam 3 mg for 8 days did not potentiate the depressant CNS effects of lorazepam.

QTc-Prolonging Drugs:

The concurrent use of BLEXTEN with other QTc prolonging drugs is not recommended.

Inhibitors of P-Glycoprotein:

Plasma levels of bilastine can be increased by inhibitors of P-glycoprotein; the concomitant use of these drugs with bilastine is not recommended. Drugs that inhibit P-glycoprotein include, but are not limited to certain azole antifungal, macrolide antibiotics, and HIV protease inhibitors (see WARNINGS AND PRECAUTIONS).

Drugs that Cause Electrolyte Depletion:

The use of BLEXTEN with drugs that can cause electrolyte imbalance is not recommended (see WARNINGS AND PRECAUTIONS).

Drug-Food Interactions

Plasma bilastine C_{max} , AUC_{0-t} , and AUC_{0-inf} values were approximately 33%, 17%, and 18% lower, respectively, for subjects receiving BLEXTEN following a high-fat breakfast compared to BLEXTEN administered under fasted conditions. Plasma bilastine C_{max} , AUC_{0-t} , and AUC_{0-inf} values were approximately 25%, 26%, and 25% lower, respectively, for subjects receiving BLEXTEN following a low-fat breakfast compared to bilastine administered under fasted conditions. The Phase 3 clinical trials were conducted under fasting conditions to ensure clinically appropriate exposure to bilastine.

Grapefruit Juice

Concomitant administration of BLEXTEN and grapefruit juice decreased bilastine bioavailability by approximately 30%. Concomitant administration of BLEXTEN with other fruit juices may also decrease bioavailability. The degree of bioavailability decrease may vary between producers and types of fruit juice. The mechanism for this interaction is an inhibition of OATP1A2, an uptake transporter for which bilastine is a substrate. Medicinal products that are substrates or inhibitors of OATP1A2, such as ritonavir or rifampicin, may likewise have the potential to decrease plasma concentrations of bilastine.

Drug-Herb Interactions

Interactions with herbal products have not been studied.

Drug-Laboratory Interactions

Interactions with laboratory tests have not been observed.

Drug-Lifestyle Interactions

A study was performed to assess the effects of BLEXTEN and bilastine 40 mg on real time driving performance compared to placebo and hydroxyzine 50 mg. Bilastine did not affect

driving performance differently than placebo following day one or after one week of treatment. However, patients should be informed that very rarely some people experience drowsiness, which may affect their ability to drive or use machines.

DOSAGE AND ADMINISTRATION

Dosing Considerations

Renal impairment

No dosage adjustments are required in subjects with renal impairment.

Hepatic impairment

There is no clinical experience in subjects with hepatic impairment. Since bilastine is not metabolized and renal clearance is the major route of elimination, hepatic impairment is not expected to increase systemic exposure above the safety margin. Therefore, no dosage adjustment is required in subjects with hepatic impairment.

Geriatrics (> 65 years of age)

No dosage adjustments are recommended in subjects > 65 years of age.

Recommended Dose and Dosage Adjustment

Recommended daily dose:

<i>Seasonal Allergic Rhinitis</i>	≥12 years	20 mg (1 tablet) once daily
<i>Chronic Spontaneous Urticaria</i>	≥18 years	20 mg (1 tablet) once daily

Maximum daily dose

The maximum recommended daily dose is 20 mg (1 tablet) and should not be exceeded.

Missed Dose

If a dose is missed, the next scheduled dose should be taken. An extra dose should not be taken.

Administration

One 20 mg tablet of BLEXTEN once daily should be swallowed with water on an empty stomach to achieve optimal exposure to bilastine. The BLEXTEN tablet should be taken without food or grapefruit juice or other fruit juices, as these dietary compounds may decrease the effect of bilastine. Patients should be instructed to take the tablet and wait for one hour before taking food or fruit juice, or if food or fruit juice has been taken, to wait for two hours before taking the tablet.

OVERDOSAGE

Information regarding acute overdose is limited to experience from clinical trials conducted during the development of bilastine. After administration of bilastine at doses 10 to 11 times the therapeutic dose (220 mg (single dose); or 200 mg/day for 7 days) to healthy volunteers

frequency of treatment emergent adverse events was two times higher than with placebo. The adverse reactions most frequently reported were dizziness, headache and nausea.

Electrocardiogram monitoring is recommended in the event of overdosage (see WARNINGS AND PRECAUTIONS, ACTION AND CLINICAL PHARMACOLOGY, Pharmacodynamics).

Overdose in the post-marketing setting has been reported rarely; any adverse events were consistent with those seen in clinical trials.

In the event of overdose, symptomatic and supportive treatment is recommended. There is no known specific antidote to bilastine.

For management of a suspected drug overdose, contact your regional Poison Control Centre.

ACTION AND CLINICAL PHARMACOLOGY

Mechanism of Action

Bilastine is an antihistamine; its principal effects are mediated via selective inhibition of peripheral H₁ receptors. The antihistaminic activity of bilastine has been documented in a variety of animal and human models. It shows moderate to high affinity for histamine H₁-receptors and no affinity for muscarinic, serotonergic, dopaminergic and noradrenergic receptors. Bilastine has been demonstrated to have limited distribution to the brain following oral administration.

Pharmacodynamics

Studies in adult healthy subjects showed that 20 mg bilastine inhibited the skin wheal and flare reactions induced with a histamine prick test for 24 hours, as well as the wheal and flare reactions in cold induced urticaria.

In an environmental chamber study, the onset of action of bilastine was demonstrated to be 1 hour after treatment administration and the effect lasted for 26 hours.

In controlled clinical trials at the recommended dose of 20 mg once daily, the CNS safety profile of bilastine was similar to placebo and the incidence of somnolence was not statistically different from placebo. Bilastine at doses of up to 40 mg once daily did not affect psychomotor performance in clinical trials and did not affect driving performance in a standard driving test.

Cardiac Electrophysiology: A randomized, double-blind, placebo- and positive-controlled, 5-way crossover study of the electrocardiographic effects of bilastine was performed in 30 healthy adult subjects. Bilastine was tested at a therapeutic dose of 20 mg/day and a suprathreshold dose of 100 mg/day, each administered for four days.

The bilastine 20 mg/day and 100 mg/day treatments were associated with a concentration-related prolongation of the QTcF ($QTcF = QT/RR^{1/3}$) interval. On day 4 of treatment with the therapeutic

20 mg/day dose, statistically significant positive mean differences from placebo were observed at 1 and 3 h post-dosing, with a maximum mean difference from placebo of 4.0 ms (90% CI 1.20, 6.73) at 1 h.

On day 4 of treatment with the suprathreshold bilastine 100 mg/day dose, statistically significant QTcF prolongation was observed at 5 consecutive time points from 0.5 to 3 h post-dose, with a maximum mean difference from placebo of 6.0 ms (90% CI 2.59, 9.48) at 2 h (see, CONTRAINDICATIONS, WARNINGS AND PRECAUTIONS, ADVERSE REACTIONS, DRUG INTERACTIONS, OVERDOSAGE).

Bilastine administered at doses of 20 mg/day and 100 mg/day for four days was not observed to affect the QRS duration, the PR interval, or heart rate.

Pharmacokinetics

Bilastine pharmacokinetics were studied following a single oral dose of 20 mg to healthy volunteers. The results are presented in Table 2 below.

Table 2 Bilastine pharmacokinetic parameters after a single oral dose of 20 mg (n=12)

Parameter	Mean ± standard deviation
AUC _(0-t) (ng*h/ml)	993.99 ± 279.93
AUC _{0-∞} (ng*h/ml)	997.40 ± 279.81
% AUC _{0-∞} extrapolation	0.37 ± 0.26
C _{max} (ng/mL)	219.67 ± 62.06
t _{max} (h) [#]	1.13 ± (0.75-3)
t _{1/2} (h)	5.47 ± 2.13
Ae (mg)	8.39 ± 4.70
Cl _r (l/h)	9.20 ± 7.35

[#]: median and range

The pharmacokinetic data obtained in 310 healthy volunteers enrolled in several Phase 1 studies were combined in a population pharmacokinetic two compartment model. t_{1/2β} was 14.53 hrs, AUC was 1104.97 ng.h/mL and C_{max} was 220.08 ng/mL, with a t_{max} of 1.29 h.

Absorption

Bilastine is rapidly absorbed after oral administration with a time to maximum plasma concentration of around 1.13 hours. No accumulation was observed in subjects treated with bilastine from 20 to 100 mg daily after 14 days. The absolute bioavailability of bilastine is 61%.

Distribution

In vitro and *in vivo* studies have shown that bilastine is a substrate of P-gp (see DRUG INTERACTIONS / Drug-Drug Interactions) and OATP (see DRUG INTERACTIONS / Drug-Food Interactions). Bilastine does not appear to be a substrate of the transporter BCRP or renal transporters OCT2, OAT1 and OAT3. Based on *in vitro* studies, bilastine is not expected to inhibit the following transporters in the systemic circulation: MRP2, BCRP, BSEP, OATP1B3, OATP2B1, OAT1, OAT3, OCT2 and NTCP. Mild inhibition was detected for P-gp, OATP2B1 and OCT1, with an estimated $IC_{50} \geq 300 \mu M$, much higher than the calculated clinical plasma C_{max} . However, based on these results inhibition by bilastine of transporters present in the intestinal mucosa, e.g. P-gp, cannot be excluded.

At therapeutic doses bilastine is 84-90% bound to plasma proteins.

Biotransformation

Bilastine is not significantly metabolized in humans (see Excretion). Bilastine does not induce or inhibit activity of CYP450 isoenzymes in *in vitro* and *in vivo* studies. Studies examining hepatic tissues (microsomes and hepatocytes) of human origin using different doses of bilastine demonstrated that there was little to no interaction with CYP isoenzymes.

Excretion

In a mass balance study performed in healthy volunteers, after administration of a single dose of 20 mg ^{14}C -bilastine, almost 95% of the administered dose was recovered in urine (28.3%) and faeces (66.5%) as unchanged bilastine. The mean elimination half-life calculated in healthy volunteers in the population pharmacokinetic model was 14.5 h.

Linearity

Bilastine presents linear pharmacokinetics in the dose range studied (5 to 220 mg), with a low inter-individual variability.

Special Populations and Conditions

Pediatrics (< 12 years of age)

The safety and efficacy of BLEXTEN in children under 12 years of age have not been established.

Adolescents (12 years to 17 years of age)

No pharmacokinetic data are available in adolescents (12 years to 17 years).

Geriatrics

The safety and efficacy of BLEXTEN have been demonstrated in a limited number of subjects > 65 years of age (n=34) enrolled in controlled clinical studies. A further open label study provided safety data for 150 patients treated for urticaria and/or allergic rhinitis. The pharmacokinetic parameters of BLEXTEN are comparable in healthy subjects > 65 years of age and younger subjects, and no dosage adjustments are considered necessary in this patient population.

Gender

No statistically significant gender-related differences have been observed with regard to the pharmacokinetic parameters of bilastine.

Hepatic Insufficiency

There are no pharmacokinetic data in subjects with hepatic impairment. Bilastine is not significantly metabolized in humans, with the vast majority of the administered dose excreted unchanged. Since the results of the renal impairment study indicate renal elimination to be a major contributor in the elimination of bilastine, biliary excretion is expected to be only marginally involved. Changes in liver function are not expected to have a clinically relevant influence on bilastine pharmacokinetics.

Renal Insufficiency

A study of BLEXTEN was performed in 24 male and female adults: 6 healthy controls and 6 each with *mild*, *moderate*, and *severe* renal impairment. The mean plasma bilastine concentrations in subjects with renal impairment generally exceeded those in the control group during the first 12 hours after dose administration. The subjects with renal impairment had higher mean bilastine AUC and C_{max} values than the healthy subjects. The mean $AUC_{0-\infty}$ ranged from 737.4 to 1708.5 ng·hr/mL in healthy subjects and severely impaired subjects, respectively. The mean C_{max} ranged from 144.0 to 271.1 ng/mL in healthy subjects and moderately impaired subjects, respectively. There did not appear to be any substantial differences in median T_{max} or in the mean elimination rate constants for bilastine. Renal clearance was highest in healthy subjects, 8.7 L/hr and lowest in subjects with severe renal impairment, 4.0 L/hr. Urinary excretion of bilastine was essentially complete by the end of the 48 to 72 hour collection interval for all subjects, and the urinary excretion plots show essentially parallel excretion rate curves across groups.

STORAGE AND STABILITY

Recommended storage conditions: Store between 15°C – 30°C.

SPECIAL HANDLING INSTRUCTIONS

Keep out of reach and sight of children.

DOSAGE FORMS, COMPOSITION AND PACKAGING

Dosage Forms

BLEXTEN (bilastine) Tablets: 20 mg for oral administration.

Composition

BLEXTEN tablets are oval (length 10 mm, width 5 mm), biconvex, white, scored and free of cracks or defects. Each tablet contains 20 mg of active ingredient, bilastine.

The score line is only to facilitate breaking for ease of swallowing and not to divide into equal

doses.

Non-medicinal ingredients: colloidal anhydrous silica, magnesium stearate, microcrystalline cellulose and sodium starch glycolate.

Packaging

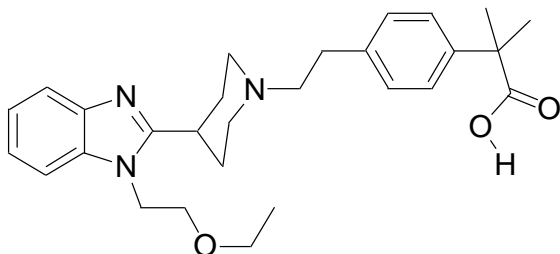
BLEXTEN is available in blister packs containing 2 or 10 tablets. Cartons contain 2, 10, 20, 30, 40 or 50 tablets. Not all carton sizes may be marketed.

PART II: SCIENTIFIC INFORMATION

PHARMACEUTICAL INFORMATION

Drug Substance

Proper name:	Bilastine
Chemical name:	2-[4-(2-(4-(1-(2-ethoxyethyl)-1H-benzimidazol-2-yl)piperidin-1-yl)ethyl)phenyl]-2-methylpropionic acid or p-[2-[4-[1-(2-ethoxyethyl)-2-benzimidazolyl]piperidino]ethyl]- α -methylhydratropic acid
Molecular formula:	C ₂₈ H ₃₇ N ₃ O ₃
Molecular mass:	463.61 g/mol



Structural formula:

Physicochemical properties:

Physical Form: White, crystalline powder

Solubility:

Practically insoluble	acetonitrile
Very slightly soluble	water, buffer pH=6, buffer pH=4.5, buffer pH=8, acetone and isopropyl alcohol, glycerin
Slightly soluble	NaOH 0.01N, ethanol, methanol and dimethylsulfoxide (DMSO), 1,2-propylene glycol
Sparsingly soluble	dimethylformamide (DMF), 0.1N hydrochloric acid (HCl) and buffer pH=3.5
Freely soluble	chloroform, HCl 1N and NaOH 1N

pKa Value: 4.15 \pm 0.06, when determined by ultraviolet spectrophotometry and 4.18 by HPLC.

Hygroscopicity: Bilastine is not hygroscopic tested under ambient temperature (25.1 \pm 0.1 °C) and relative humidity (85 % RH) conditions.

CLINICAL TRIALS

Efficacy in Seasonal Allergic Rhinitis

Study demographics and trial design

The clinical efficacy of BLEXTEN (bilastine 20 mg tablets) in the treatment of seasonal allergic rhinitis (SAR) was examined in three double-blind, randomized, placebo- and active-controlled parallel group clinical trials (BILA 1003/RAE; BILA 1704/RAE, and BILA 0802/RAE). A total of 2359 patients were randomized to treatment with bilastine, placebo or active comparator (desloratadine 5 mg and cetirizine 10 mg).

Table 3 Summary of patient demographics for clinical trials in seasonal allergic rhinitis

Study #	Trial design	Dosage, route of administration and duration	Study subjects (n)	Mean age (Range)	Gender M/F
BILA 1003/RAE (Bachert et al, 2009)	Double-blind, randomized, placebo- and active-controlled parallel group	Bilastine 20 mg Desloratadine 5 mg Placebo Oral, once daily for 14 days	233 242 245 ITT Total: 720	30 (12-70)	121/112 126/116 118/127
BILA 1704/RAE (Kuna et al, 2009)	Double-blind, randomized, placebo- and active-controlled parallel group	Bilastine 20 mg Cetirizine 10 mg Placebo Oral, once daily, for 14 days	226 227 225 ITT Total: 678	31 (12-69)	108/118 107/120 108/117
BILA 0802/RAE	Double-blind, randomized, placebo- and active-controlled parallel group	Bilastine 20 mg Bilastine 40 mg Cetirizine 10 mg Placebo Oral, once daily, for 14 days	240 239 240 242 ITT Total: 961	35.1 (12-70)	101/139 85/154 86/154 83/159

In the pivotal Phase 3 SAR studies the primary efficacy variable was the change in the area under the curve (AUC) of the total symptom score (TSS) from baseline to the end of the study (Day 14).

TSS was comprised of the reflective total nasal symptom score (rTNSS) and the reflective total non-nasal symptom score (rTNNSS).

rTNNSS was based on the twice daily, AM and PM, reflective assessment of four nasal symptoms: rhinorrhea, nasal congestion, nasal itching, and sneezing, using a four point (0 [none] to 3 [severe]) scoring scale.

rTNSS included four non-nasal symptoms: ocular itching, tearing, ocular redness, itching of ears and/or palate (the latter being scored only in study BILA 1003/RAE), and was assessed in a similar manner.

In one study, patients also recorded these symptoms in an instantaneous manner.

Change from baseline in rTNSS, rTNSS, TSS, and Quality of Life (QoL) were assessed as secondary variables.

In two of the trials (BILA 1003/RAE & BILA 1704/RAE), BLEXTEN demonstrated superior efficacy to placebo. In the third trial, BILA 0802/RAE, neither BLEXTEN nor the active control, cetirizine, could be distinguished from placebo. Therefore, the results from this study are not presented here.

Study results

BILA 1003/RAE

The primary efficacy end-point, change in AUC of TSS from baseline to the end of the study in BLEXTEN-treated patients was statistically significantly different from placebo (Table 4). At the same time, it did not differ from the active comparator (results not shown).

Table 4 SAR Study BILA 1003/RAE - Total Symptom Score - Area under the Curve (ITT Population)

	Placebo N=245	BLEXTEN N=233	P value ¹
Mean (SD)	118.4 (62.7)	98.4 (58.1)	<0.001
95% CI	110.5, 126.3	90.9, 105.9	

¹ Tukey test

The individual component symptom scores that comprise the total symptom complex were also different for BLEXTEN treated patients compared to placebo (Table 5).

Table 5 SAR Study BILA 1003/RAE - Summary of Key Secondary Results (ITT Population)

Variable – Mean (SD) Change from Baseline to Day 14	Placebo N=245	BLEXTEN N=233	Difference from Placebo	
			Estimate	95% CI
rTNSS	-2.3 (2.3)	-2.9 (2.2)	0.67	0.27, 1.07
rTNSS	-1.3 (2.3)	-2.0 (2.1)	0.70	0.30, 1.10
TSS	-3.5 (4.2)	-4.9 (3.9)	1.35	0.62, 2.08
RQLQ Total Score	-1.3 (1.3)	-1.6 (1.2)	0.3	0.07, 0.52

TSS – Total Symptom Score; rTNSS – reflective Nasal Symptoms Score; rTNSS – reflective Non Nasal Symptom Score; RQLQ – Rhinoconjunctivitis Quality of Life Questionnaire

Study BILA 1704/RAE

Table 6 SAR Study BILA 1704/RAE - Total Symptom Score - Area under the Curve (ITT Population)

	Placebo N=225	BLEXTEN N=226	P value¹
Mean (SD)	100.66 (51.71)	76.49 (47.85)	<0.001
95% CI	93.86, 107.45	70.21, 82.76	

¹ Tukey test

The individual component symptom scores that comprise the total symptom complex were also different for BLEXTEN treated patients compared to placebo (Table 7).

Table 7 SAR Study BILA 1704/RAE - Summary of Key Secondary Results (ITT Population)

Treatment Variable	Placebo N=225	BLEXTEN N=226	Difference from Placebo	
			Estimate	95% CI
rTNSS (mean change from baseline)	-2.0 (2.5)	-3.1 (2.3)	1.15	0.70, 1.59
rTNNSS (mean change from baseline)	-0.9 (1.9)	-1.6 (1.9)	0.73	0.38, 1.08
TSS (mean change from baseline)	-2.9 (4.1)	-4.8 (3.8)	1.88	1.15, 2.61

TSS – Total Symptom Score; rTNSS – reflective Nasal Symptoms Score; rTNNSS – reflective Non Nasal Symptom Score;

Onset of action was evaluated in one environmental exposure unit study in allergic rhinitis patients with a single dose of BLEXTEN. BLEXTEN was found to have an onset of action 1 hour after oral intake.

Efficacy in Chronic Spontaneous Urticaria

Study demographics and trial design

The efficacy of BLEXTEN for the treatment of chronic spontaneous urticaria was evaluated in two multi-center, randomized, placebo-controlled, double-blind clinical trials of 4 weeks duration in adult patients 18 to 76 years of age with chronic spontaneous urticaria. The two trials included one 4-week dose-ranging trial (BILA 0601/UCI) and one 4-week single dose level efficacy trial (BILA 2006/UCI). These trials included 742 patients (229 males and 513 females). Most patients (>90%) were Caucasian and the mean age was 41.5. A total of 339 patients received bilastine (of these patients, 230 received bilastine 20 mg once daily), and 237 received placebo.

Table 8 Summary of patient demographics for clinical trials in chronic spontaneous urticaria

Study #	Trial design	Dosage, route of administration and duration	Study subjects (n)	Mean age (Range)	Gender M/F
BILA 0601/UCI	Double-blind, randomized, dose-ranging, placebo-controlled, parallel-group	Bilastine 10 mg Bilastine 20 mg Bilastine 30 mg Placebo Oral, once daily for 4 weeks	53 58 56 53 ITT Total = 219	43 (18-76)	15/33 13/25 9/28 8/21 PP Total* =152
BILA 2006/UCI (Zuberbier et al, 2010)	Double-blind, randomized, placebo- and levocetirizine-controlled parallel-group	Bilastine 20 mg **Levocetirizine 5 mg Placebo Oral, once daily for 4 weeks	172 163 181 ITT Total = 516	40 (18-75)	63/109 54/109 40/141

PP – Per Protocol Population; ITT – Intent to Treat Population

*PP was pre-determined for primary analysis for BILA0601/UCI

** Levocetirizine is not approved in Canada for the treatment of CSU

Efficacy was assessed based on the patients' diary card on reflective urticaria symptoms - itching intensity, wheals number and maximum size of wheals - each scored on a 0-3 interval scale. The primary efficacy variable was the change from baseline in the mean of the morning (AM) and evening (PM) Total Symptom Score (TSS), defined as the sum of the itching intensity score, the wheals number score, and the maximum size of the wheals score, over the 28 days of the treatment period.

Study results

BILA 0601/UCI

Table 9 CSU Study BILA 601/UCI – Total Symptom Score Change from Baseline at Day 28 (PP Population)

	Placebo n=29	BLEXTEN™ n=38	P-value¹
Mean (SD)	-1.9 (2.8)	-4.1 (2.9)	0.003
95% CI	-2.92, -0.88	-5.02, -3.18	

¹ T-test

The individual component symptom scores that comprise the total symptom complex were also different for BLEXTEN treated patients compared to placebo (Table 10).

Table 10 CSU Study BILA 0601/UCI - Summary of Secondary Results (PP Population)

Variable – Mean (SD) Change from Baseline to Day 28	Placebo N=29	Bilastine 20 mg N=38	Difference from Placebo	
			Estimate	95% CI
IIS	-0.8 (1.1)	-1.5 (1.1)	0.7	0.17, 1.23
WNS	-0.6 (1.1)	-1.3 (1.1)	0.7	0.17, 1.23
MSWS	-0.6 (1.1)	-1.2 (1.2)	0.6	0.04, 1.15
Investigator’s CGI (median(range))	9 (1-15)	3.5 (1-15)	---	----

IIS: Itching Intensity Score, WNS: Wheal Number Score, MSWS: Maximum Size of Wheal Score, CGI: Clinical Global Impression

BILA 2006/UCI

Table 11 CSU Study BILA 2006/UCI - Change from Baseline in the AM/PM TSS over the 28 Days of Treatment Period (ITT Population)

	Placebo n=181	BLEXTEN n=172	P-value¹
Mean (SD)	-2.99 (2.16)	-4.23 (2.1)	<0.001
95% CI	-3.67, -2.31	-4.89, -3.57	

¹ Tukey test

The individual component symptom scores that comprise the total symptom complex were also different for BLEXTEN treated patients compared to placebo (Table 12).

Table 12 CSU Study BILA 2006/UCI - Summary of Secondary Results (ITT Population)

Variable – Mean (SD) Change from Baseline to Day 28	Placebo N=181	Bilastine 20 mg N=172	Difference from Placebo	
			Estimate	95% CI
IIS	-1.01 (0.78)	-1.48 (0.73)	0.47	0.31, 0.63
WNS	-1.00 (0.74)	-1.37 (0.73)	0.37	0.22, 0.52
MSWS	-0.97 (0.80)	-1.37 (0.83)	0.40	0.23, 0.57
Investigator's CGI (median(range))	6 (1-13)	5 (1-9)	---	----

IIS: Itching Intensity Score, WNS: Wheal Number Score, MSWS: Maximum Size of Wheal Score, CGI: Clinical Global Impression

DETAILED PHARMACOLOGY

Nonclinical Pharmacology

Pharmacodynamics

Bilastine has shown selective antagonism of H₁ receptor mediated effects *in vitro*, in isolated organs, and *in vivo* in nonclinical pharmacology studies. *In vitro*, bilastine displaced the H₁ receptor antagonist pyrilamine from the human recombinantly expressed H₁ receptor with a K_i of 64 nM (30 ng/mL). Bilastine did not modify H₂ and H₃ mediated effects in isolated animal organs at 100 μM and 30 μM, respectively, and did not bind to human recombinant H₄ receptors at 10 μM. In *in vivo* animal models of anaphylaxis, single dose oral administration of bilastine dose-dependently reduced the allergen-induced increase in capillary permeability with ED₅₀ values of approximately 6 mg/kg. Bilastine showed no efficacy in mouse models of type III and IV hypersensitivity reactions.

Safety Pharmacology

Nonclinical safety pharmacology studies conducted with bilastine investigated the main organ systems, cardiovascular, pulmonary, and central nervous system, but also effects on the gastrointestinal system. In two separate studies, bilastine caused a concentration-dependent suppression of hERG tail currents in stably transfected HEK 293 cells with IC₅₀ values of 6.5 μM and 17.17 μM, respectively, based on nominal concentrations. In the isolated guinea pig heart atrium, bilastine at a concentration of 100 μM did not affect heart beat strength or frequency. In conscious telemetered dogs, bilastine given once orally at dose levels of 10, 30, or 100 mg/kg caused dose-dependent QTc prolongation at 30 and 100 mg/kg and reductions in systolic and diastolic blood pressure at the high dose only. Decreased heart rate and PR interval prolongation were also observed at 30 and 100 mg/kg. In a second study in dogs, no effect on these parameters was seen at the same dose levels. After a single oral dose, bilastine had minimal/ no effects on the central nervous system. An oral dose of 1,000 mg/kg transiently increased alertness in rats and 800 mg/kg caused a moderate decrease of motor activity in mice. Bilastine did not affect respiratory parameters at oral doses up to 1,000 mg/kg in rats. Bilastine had no effect on gastric secretion after 100 mg/kg administered intraduodenally in the rat or on intestinal motility in the mouse after oral doses up to 300 mg/kg.

Pre-Clinical Pharmacokinetics

Bilastine is orally bioavailable in mice, rats, rabbits, and dogs. There is large interanimal variability in the plasma concentrations with some studies reporting multiple peaks after oral administration. In rats, exposure after gavage dosing appeared higher in females than in males. Distribution studies with ¹⁴C labelled bilastine in rat indicate limited peripheral distribution, in which concentrations of radioactivity were highest in the liver and kidney. In pigmented rats, detectable levels persisted in the eye and uveal tract for up to 14 days, indicating binding to melanin. In pregnant rats, there was low-level passage of radioactivity across the placental barrier into the tissues of the fetus. The mechanisms have not been elucidated, but pretreatment of rats with a potent P-gp inhibitor significantly increased exposure. Bilastine plasma protein binding was moderate with limited distribution into red cells. Bilastine is minimally metabolized *in vitro* and *in vivo* in animals. After oral dosing, bilastine was rapidly excreted in rats and dogs, with 7-12% and 4-6% of the dose was recovered in urine of rats and dogs, respectively, and the balance recovered in feces. In bile duct cannulated rats, 17% of the administered dose was excreted in the bile.

In a lactation study, bilastine was identified in the milk of nursing rats administered a single oral dose (20 mg/kg). Concentrations of bilastine in milk were about half of those in maternal plasma. The relevance of those results for humans is unknown.

TOXICOLOGY

Single-Dose Toxicity

Bilastine has a low order of acute oral toxicity and there were no clinical signs or deaths after a single oral dose of 2000 mg/kg in rats and 5000 mg/kg in mice. After single i.v. dose administration, bilastine was lethal at ≥60 mg/kg in rats and at ≥30 mg/kg in mice. In both rats and mice, death occurred within 5 minutes of dosing and was preceded by signs such as tonic-clonic convulsions, prostration, and/or dyspnea. The lowest non-lethal dose was 45 mg/kg in rats

and 20 mg/kg in mice. Plasma bilastine concentrations were determined after i.v. dosing in the rat; at 50 mg/kg, concentrations at the earliest sampling point (10 min after i.v. dosing) were >190 times the clinical C_{max} at maximum recommended human dose (MRHD).

Repeat-Dose Toxicity

Repeat oral dose toxicity studies were performed in mice, rats, and dogs for up to 13, 26 and 52 weeks, respectively. Toxicity of bilastine administered i.v. daily for 4 weeks was evaluated in rats and dogs.

Oral bilastine administration of up to 2000 mg/kg/day in mice and rats and 800 mg/kg/day in dogs resulted in no signs in mice and transient clinical signs in rats and dogs (salivation in rats; vomiting, salivation, soft feces/diarrhea, and decreased activity in the dog). QTc was slightly increased in dogs at the end of 52 weeks of oral dosing at 800 mg/kg/day. Clinical pathology changes in rats and dogs were generally mild, occurred at high doses, and were reversible after 2 to 8 weeks without dosing. Liver and thyroid changes were noted in mice and rats and were considered adaptive responses. In the dog, at 800 mg/kg after dosing for 52 weeks, there was an increase in epididymal spermatozoa with abnormal morphology and one male had reduced spermatozoa motility. There were no histopathological changes in testes and prostate in the 52 week dog study.

After daily i.v. dosing for 4 weeks at doses up to 50 mg/kg/day in the rat, there were no clinical signs noted, but 4 out of 58 rats given 50 mg/kg/day were found dead. In the kidney at 50 mg/kg/day, there was minimal to slight proximal tubule hypertrophy in the cortico-medullary region of the kidney. All dogs survived 60 mg/kg/day i.v. for 4 weeks, there were dose related increased incidences of tremor and lip smacking post dose at all doses (≥ 30 mg/kg/day), and vomiting was seen during and after administration of 40 and 60 mg/kg/day. Increased severity of venous thrombosis at and around the injection sites was noted at 60 mg/kg/day. After i.v. dosing in the dog, there were no effects on cardiovascular parameters or changes in epididymal spermatozoa morphology and motility.

No Adverse Effect Levels (NOAELs) were determined for all findings in repeat oral and i.v. dose studies. The margin to clinical C_{max} and AUC at the MRHD is at least 10 times and for most findings several hundred times.

Genotoxicity

Bilastine was not mutagenic in bacterial mutation assays at concentrations up to 2000 $\mu\text{g}/\text{plate}$ or clastogenic in a human lymphocyte chromosome aberration assay at concentrations up to 500 $\mu\text{g}/\text{mL}$. In the *in vivo* mouse micronucleus test, single oral bilastine doses of 2000 mg/kg did not induce clastogenicity.

Carcinogenicity

In carcinogenicity studies in mice and rats, there were no bilastine related increases in tumor incidence at dose levels up to 2,000 mg/kg/day in mice and 1,200 mg/kg/day in rats administered in the diet for up to 104 weeks at which AUCs were >100 times higher than at the MRHD. In the rat carcinogenicity study, urolithiasis was noted in females at 1200 mg/kg/day. At the NOAEL of 700 mg/kg/day for this finding, AUCs were >200 times that of clinical values at MRHD.

Reproductive Toxicity

In rats, daily oral administration of bilastine prior to and during mating and early pregnancy had no effect on female and male fertility, epididymal sperm count, motility and morphology and early embryonic development at doses up to 1000 mg/kg/day. Bilastine administered daily by oral gavage to pregnant rats and rabbits during the period of major organogenesis did not result in maternal or embryofetal toxicity in the rat at doses up to 1000 mg/kg/day. At a maternally toxic dose in rabbits (400 mg/kg/day), findings consistent with delayed skeletal ossification in the fetuses were probably related to reduced food consumption by the does, with 110 mg/kg/day identified as a NOAEL. In a peri- and post-natal development study, bilastine was administered orally to pregnant rats (F0 generation) at 75, 275, and 1000 mg/kg/day from gestation day 6 to lactation day 21. There were no clinical signs in the treated females and no effects on mating or pregnancy duration and index, and all the females delivered, nursed, and cared for their offspring normally. At the high dose, there was a slight reduction in body weight and body weight gain during lactation and one female had 100% postimplantation loss. There were no effects of bilastine treatment of the dams on pup development, sensory function, and motor development (F1 generation). The treatment of the dams had no effects on the offspring's reproductive capacity or their offspring (F2 generation). The NOAEL for the F0 generation was 275 mg/kg/day and the NOAEL for the offspring was 1000 mg/kg/day. The NOAELs for all reproductive endpoints in rats and rabbits were associated with AUCs >50 times higher than the clinical exposure at the MRHD.

REFERENCES

Bachert C, Kuna P, Sanquer F, Ivan P, Dimitrov V, Gorina MM, et al. Comparison of the efficacy and safety of bilastine 20 mg vs desloratadine 5 mg in seasonal allergic rhinitis patients. *Allergy*. 2009;64(1):158-65.

Graff C, Struijk JJ, Kanters JK, Andersen MP, Toft E, Tyl B. Effects of Bilastine on T-wave Morphology and the QTc Interval: A Randomized, Double-Blind, Placebo-Controlled, Thorough QTc Study. *Clin Drug Investig*. 2012;32(5):339-351.

Krause K, Spohr A, Zuberbier T, Church MK, Maurer M. Up-dosing with bilastine results in improved effectiveness in cold contact urticaria. *Allergy*. 2013;68(7):921-928.

Kuna P, Bachert C, Nowacki Z, van Cauwenberge P, Agache I, Fouquert L, et al. Bilastine International Working Group. Efficacy and safety of bilastine 20 mg compared with cetirizine 10 mg and placebo for the symptomatic treatment of seasonal allergic rhinitis: a randomized, double-blind, parallel-group study. *Clin Exp Allergy*. 2009;39(9):1338-47.

Tyl B, Kabbaj M, Azzam S, Sologuren A, Valiente R, Reinbolt E, et al. Lack of Significant Effect of Bilastine Administered at Therapeutic and Supratherapeutic Doses and Concomitantly With Ketoconazole on Ventricular Repolarization: Results of a Thorough QT Study (TQTS) With QT-Concentration Analysis. *J Clin Pharmacol*. 2012;52(6):893-903.

Zuberbier T, Oanta A, Bogacka E, Medina I, Wesel F, Uhl P, et al. The Bilastine International Working Group. Comparison of the efficacy and safety of bilastine 20 mg vs levocetirizine 5 mg for the treatment of chronic idiopathic urticaria: a multi-centre, double-blind, randomized, placebo-controlled study. *Allergy*. 2010;65(4):516-528.

**READ THIS FOR SAFE AND EFFECTIVE USE OF YOUR MEDICINE
PATIENT MEDICATION INFORMATION**

**BLEXTEN®
Bilastine Tablets**

Read this carefully before you start taking BLEXTEN and each time you get a refill. This leaflet is a summary and will not tell you everything about this drug. Talk to your healthcare professional about your medical condition and treatment and ask if there is any new information about BLEXTEN.

What is BLEXTEN used for?

BLEXTEN is used to relieve the symptoms of:

- **Seasonal Allergic Rhinitis:** Hayfever (sneezing, itchy, runny, blocked-up nose, red and watery eyes) in patients 12 years of age and older.
- **Chronic Spontaneous Urticaria:** Hives and itching in patients 18 years of age and older.

How does BLEXTEN work?

BLEXTEN is an antihistamine - it blocks the action of histamine and relieves hayfever symptoms, itchiness and hives.

What are the ingredients in BLEXTEN?

Medicinal ingredient: bilastine

Non-medicinal ingredients: colloidal anhydrous silica, magnesium stearate, microcrystalline cellulose, sodium starch glycolate

BLEXTEN comes in the following dosage forms:

Tablets: 20 mg

Do not use BLEXTEN if:

- You are allergic (hypersensitive) to bilastine or any of the other ingredients of BLEXTEN.
- You have a history of irregular heart beat.

To help avoid side effects and ensure proper use, talk to your healthcare professional before you take BLEXTEN. Talk about any health conditions or problems you may have, including if you:

- have kidney problems.
- have heart problems or a family history of heart problems.
- are pregnant or planning to becoming pregnant.
- are breastfeeding.

Other warnings you should know about:

Driving and using machines

While taking BLEXTEN you may experience a feeling of tiredness, which can affect your ability to drive or use machines. If you experience tiredness, do not drive or operate machinery.

BLEXTEN is not suitable for use by children under 12 years of age.

Tell your healthcare professional about all the medicines you take, including any drugs, vitamins, minerals, natural supplements or alternative medicines.

The following may interact with BLEXTEN:

- ketoconazole (used to treat fungal infections)
- erythromycin and rifampicin (used to treat bacterial infections)
- diltiazem (used to treat heart problems)
- cyclosporine (used to suppress the immune system)
- ritonavir (used to treat HIV/AIDS)
- grapefruit and other fruit juices

How to take BLEXTEN:

- Swallow the tablet with water.
- Take BLEXTEN on an empty stomach, one hour before eating or drinking or two hours after. Food and fruit juice will lower the amount of medicine available to treat your symptoms.
- Do not take more BLEXTEN than your healthcare professional has told you to. If your symptoms do not improve, consult your healthcare professional.

Usual dose:

Seasonal Allergic Rhinitis (patients 12 years of age and older): One tablet (20 mg) once daily.

Chronic Spontaneous Urticaria (patients 18 years and older): One tablet (20 mg) once daily.

Overdose:

If you think you have taken too much BLEXTEN, contact your healthcare professional, hospital emergency department or regional Poison Control Centre immediately, even if there are no symptoms.

Missed Dose:

If you forget to take your dose on time, take it as soon as possible, and then go back to your regular dosing schedule. Do not take a double dose to make up for a forgotten dose.

What are possible side effects from using BLEXTEN?

These are not all the possible side effects you may feel when taking BLEXTEN. If you experience any side effects not listed here, contact your healthcare professional.

Side effects may include:

- headache
- sleepiness
- dizziness
- stomach pain

BLEXTEN can cause abnormal blood test results. Your healthcare professional will decide when to perform blood tests and will interpret the results.

Serious side effects and what to do about them				
Symptom / effect		Talk to your healthcare professional		Stop taking drug and get immediate medical help
		Only if severe	In all cases	
Rare	Heart problems: heart racing or slowing, cold sweats, feeling faint, feeling your heart beat, light headed, nausea, shortness of breath			√
Unknown	Allergic reactions: difficulty in breathing, swelling of your face, lips, tongue or throat, and/or swelling and redness of the skin			√

If you have a troublesome symptom or side effect that is not listed here or becomes bad enough to interfere with your daily activities, talk to your healthcare professional.

Reporting Side Effects

You can help improve the safe use of health products for Canadians by reporting serious and unexpected side effects to Health Canada. Your report may help to identify new side effects and change the product safety information.

3 ways to report:

- Online at [MedEffect \(www.healthcanada.gc.ca/medeffect\)](http://www.healthcanada.gc.ca/medeffect)
- By calling 1-866-234-2345 (toll-free);
- By completing a Consumer Side Effect Reporting Form and sending it by:
 - Fax to 1-866-678-6789 (toll-free), or
 - Mail to: Canada Vigilance Program
Health Canada, Postal Locator 0701E
Ottawa, ON
K1A 0K9

Postage paid labels and the Consumer Side Effect Reporting Form are available at [MedEffect](http://www.healthcanada.gc.ca/medeffect).

NOTE: Contact your healthcare professional if you need information about how to manage your side effects. The Canada Vigilance Program does not provide medical advice.

Storage:

Store between 15°C - 30°C.

Do not use BLEXTEN after the expiry date which is stated on the carton and the blisters after EXP. The expiry date refers to the last day of that month.

Medicines should not be disposed of via wastewater or household waste. Ask your pharmacist how to dispose of medicines no longer required. These measures will help to protect the environment.

Keep out of reach and sight of children.

If you want more information about BLEXTEN:

- Talk to your healthcare professional
- Find the full product monograph that is prepared for healthcare professionals and includes this Patient Medication Information by visiting the [Health Canada website \(www.healthcanada.gc.ca\)](http://www.healthcanada.gc.ca); the manufacturer's website aralez.com, or by calling 1-866-391-4503.

This leaflet was prepared by Aralez Pharmaceuticals Trading DAC.

Last Revised: July 10, 2018